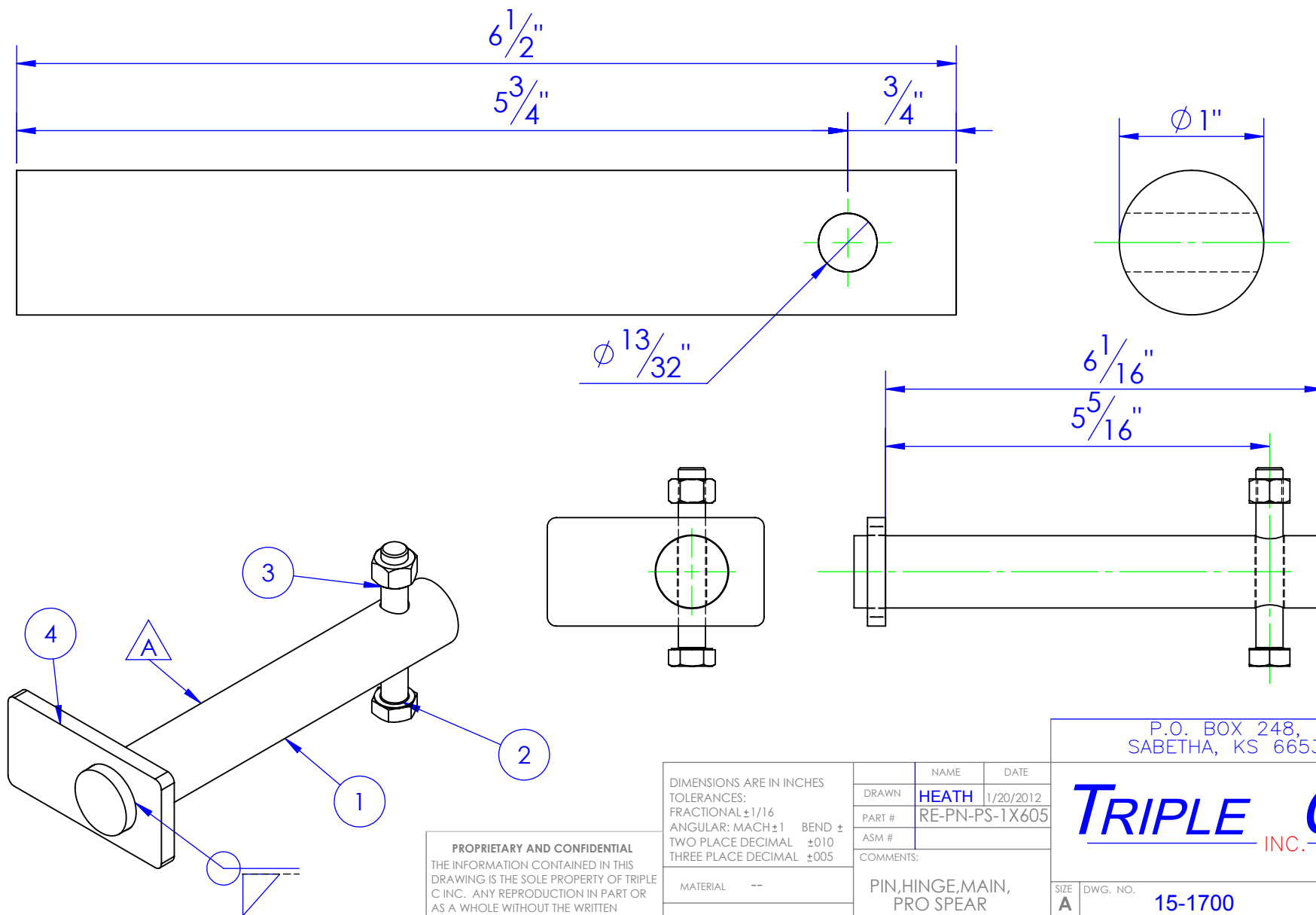


ITEM NO.	PART NUMBER	DESCRIPTION	MATERIAL	DRAWING #	QTY.
1	STC-CR NITRO 1 x 6.5	LENGTH: 6.5"	NITRO BAR 1"	15-1700	1
2	HFBOLT 0.375-24x2.5x1-C	3/8" NUT 2-1/2" HCS		STOCK	1
3	HNUT 0.3750-24-D-N	3/8" HLN		STOCK	1
4	FP-PS-LINKAGE PIN TAB	LINKAGE PIN TAB, PRO SPEAR	1/4 HRS	15-2606	1

REVISIONS			
REV.	DESCRIPTION	DATE	APPROVED
A	INITIAL RELEASE	1/20/2012	



PROPRIETARY AND CONFIDENTIAL
 THE INFORMATION CONTAINED IN THIS
 DRAWING IS THE SOLE PROPERTY OF TRIPLE
 C INC. ANY REPRODUCTION IN PART OR
 AS A WHOLE WITHOUT THE WRITTEN
 PERMISSION OF TRIPLE C INC. IS PROHIBITED.

DIMENSIONS ARE IN INCHES
 TOLERANCES:
 FRACTIONAL $\pm 1/16$
 ANGULAR: MACH ± 1 BEND \pm
 TWO PLACE DECIMAL ± 0.10
 THREE PLACE DECIMAL ± 0.005

MATERIAL ---
 DO NOT SCALE DRAWING

NAME	DATE
DRAWN HEATH	1/20/2012
PART #	RE-PN-PS-1X605
ASM #	
COMMENTS:	
PIN,HINGE,MAIN, PRO SPEAR	

P.O. BOX 248,
 SABETHA, KS 66534

TRIPLE C
 INC.

SIZE A	DWG. NO. 15-1700	REV. A
SCALE:1:1	WEIGHT: 1.66 LBS.	SHEET 1 OF 1